



SABAL HOMES

FishHawk Ranch ▪ Liz Mekdeci ▪ Ph. 813.655.7475

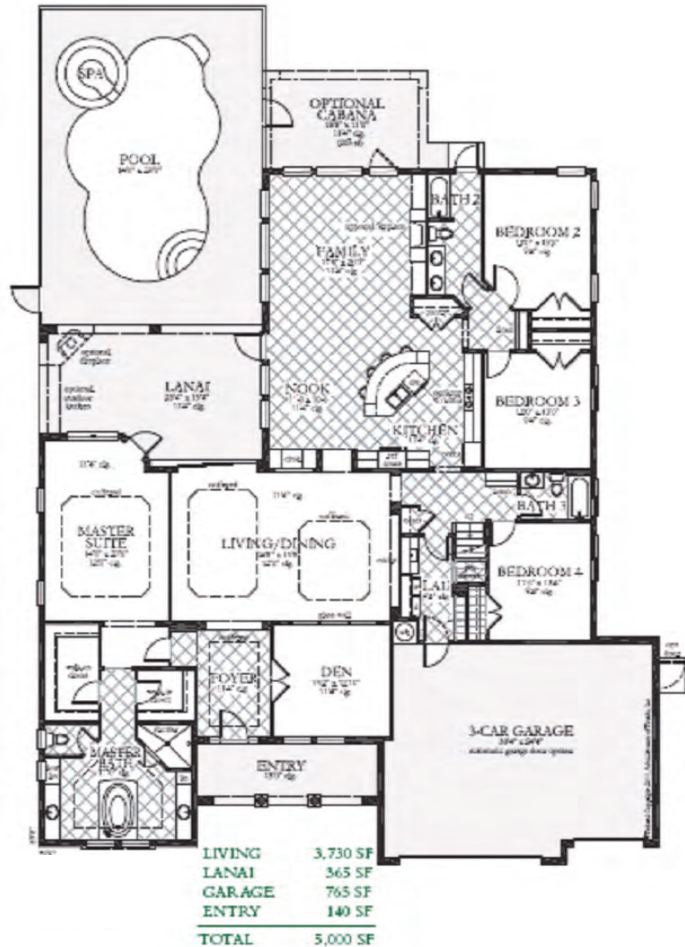
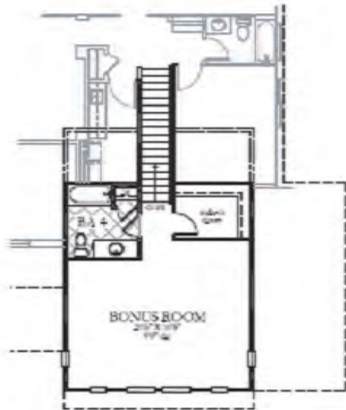
lizmekdeci@sabalhomesfl.com



Westwind 3 - Mediterranean Elevation

\$589,900 Available Early 2012 in Chapman Crossing

Westwind
WESTWIND 3
4BEDROOM/4 BATH/BONUS ROOM
3 CAR GARAGE



- Authentic Mediterranean Elevation
- Screen Enclosed Pool and Spa
- Enhanced Foyer with Back-Lit Coffe
- Super Island Kitchen with Silestone
- Upgraded Master Bath Tile
- Den with Glass Wall Panels
- Raised ceiling heights
- 3-Piece Painted Crown Mouldings

For additional information on Sabal Homes at FishHawk Ranch visit our new Tradewinds model in Chapman Crossing at 16308 Palmettoglen Court. Call Liz Mekdeci at 813.390-2683. SabalHomesFL.com

In an effort to continuously improve our product, Sabal Homes of Florida, Inc. reserves the right to change floor plans, specifications, and prices without notice. All renderings are artist's conception and are not intended to be an accurate representation (i.e. floor tile diagonal does not represent this specific inventory plan). Realtor commissions will be paid in accordance with Sabal Homes Broker Participation Policy. Transactional fees, incentives, and Realtor Bonus amounts must be written in the Sabal Homes Agreement for Sale and Purchase. All incentives are offered with Builder option to cancel or change at any time. Equal Housing Opportunity Builder CGC061658.